



Marbles Way, Tadworth

The **PERSONAL** Agent

Guide Price £255,000

Leasehold

- Ideal buy to let or first time buy
- Two double bedrooms
- No ongoing chain
- Juliet balcony
- Gas central heating
- Double glazed windows
- Modern bathroom



The Personal Agent are delighted to bring to the market this two double bedroom apartment located within easy reach of local amenities offering a fantastic first time buy or investment opportunity.

The property comprises an entrance hallway with doors to all rooms, a bright 17ft living room with access to the balcony, modern kitchen integral units and built-in oven and hob and space for a washing machine and fridge/freezer from the kitchen there is a door to a second balcony area,

master bedroom with built-in wardrobes and a further bedroom a modern bathroom completes this property. Outside there are well maintained communal grounds.

The property comes double glazed and with gas central heating.

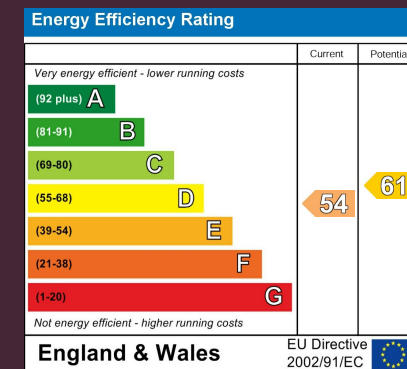
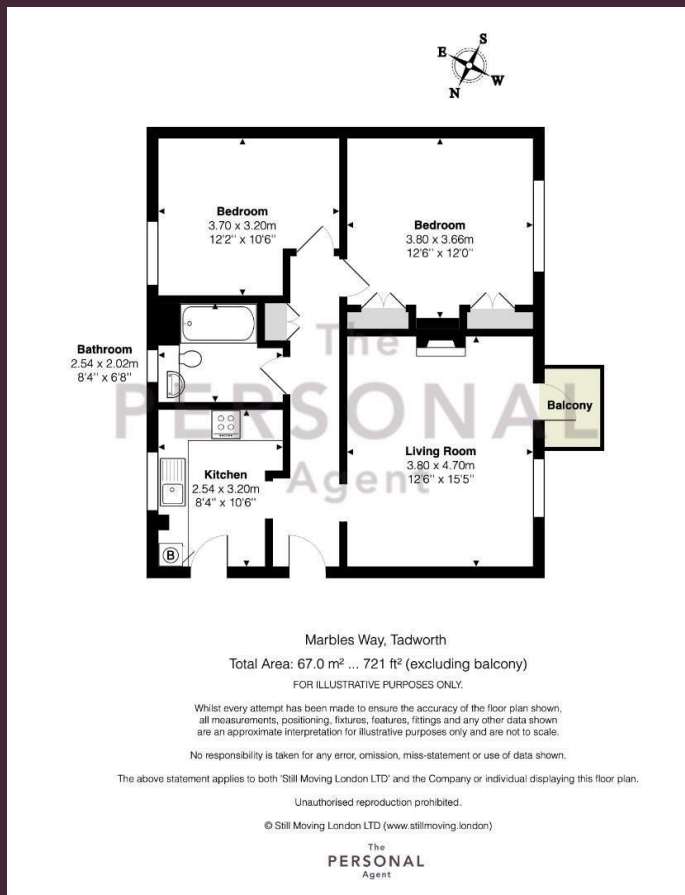
For the golf enthusiasts, there are four world-renowned golf clubs, Kingswood Golf and Country club, Surrey Downs, Walton Heath and the RAC golf club all close by. Horse Riding schools and stabling can be found in Kingswood,

Chipstead, Tadworth and Walton on the Hill. Burgh Heath is situated in between Epsom Downs, Banstead and Kingswood. It is a popular residential area offering a variety of properties. This location is ideal for family walks, dog walks, cycling, rambling or jogging.

The area is ideally situated for transport links with excellent access to the M25, , Epsom, Sutton, Redhill and Reigate. Local amenities include a large ASDA super-store as well as a useful local parade of shops. There are a variety of local excellent schools nearby.







EPSOM OFFICE
2 West Street
Epsom, Surrey, KT18 7RG
01372 745 850

STONELEIGH/EWELL OFFICE
62 Stoneleigh Broadway
Stoneleigh, Surrey, KT17 2HS
020 8393 9411

BANSTEAD OFFICE
141 High Street
Banstead, Surrey, SM7 2NS
01737 333699

LETTINGS & MANAGEMENT
163 High Street
Epsom, Surrey, KT19 8EW
01372 726 666



The Personal Agent Ltd. Registered office: 2A Boston Rd, Henley-on-Thames RG9 1DY.
Registered in England No. 4398817.



The
PERSONAL
Agent

Please Note: Whilst every attempt has been made to ensure the accuracy of the floorplans contained here, measurements of doors, windows and room areas are approximate and no responsibility is taken for any error, omission or mis-statement. These plans are for representation purposes only and should be used as such by and prospective purchaser. The services, systems and appliances listed in the specification have not been tested by The Personal Agent and no guarantee as to their operating ability or their efficiency can be given. All images and text used to advertise our properties are for the sole use of The Personal Agent Ltd.

